



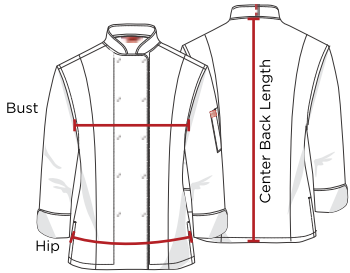
# Measurement Chart

Please bear in mind when placing your order that these are slim fit garments, should you not require slim fit please order one size up.



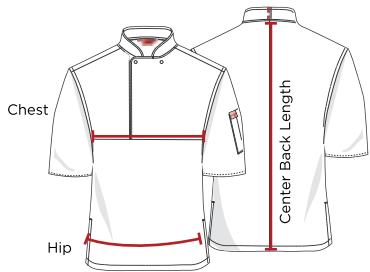
## CUL201 / CUL202 / CUL203 Basic Unisex & Executive Chef Jacket

Area of Measurement	XS	S	M	L	XL	2XL	3XL	4XL	5XL
<b>Chest</b>	68-72	72-80	81-90	91-101	102-110	111-119	120-128	129-137	138+
<b>Hip</b>	67-74	74-84	85-94	95-103	104-117	118-125	126-133	134-140	141+



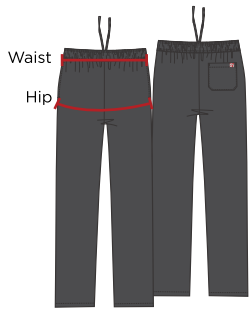
## CUL204 Culinary Basic Ladies' Chef Jacket

Area of Measurement	XS	S	M	L	XL	2XL	3XL	4XL	5XL
<b>Bust</b>	80-86	87-91	92-99	100-107	108-111	112-118	119-124	125-130	131+
<b>Hip</b>	89-94	95-100	101-106	107-115	116-123	124-130	131-138	139-144	145+



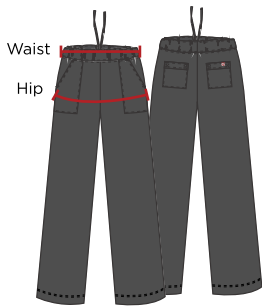
## CUL205 Culinary Basic Chef Pullover

Area of Measurement	XS	S	M	L	XL	2XL	3XL	4XL	5XL
<b>Chest</b>	75-83	84-90	91-99	100-108	109-119	120-129	130-139	140-148	149+
<b>Hip</b>	76-84	85-93	94-103	104-113	114-124	125-134	135-146	147-152	153+



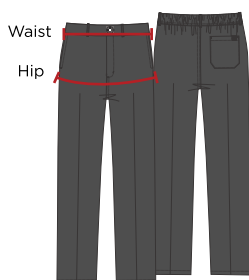
## CUL206 Culinary Unisex Baggy

Area of Measurement	XS	S	M	L	XL	2XL	3XL	4XL	5XL
<b>Waist</b>	78-86	87-95	96-106	107-116	117-124	125-132	133-141	142-152	153+
<b>Hip</b>	82-90	91-99	100-108	109-115	116-125	126-133	134-140	141-150	151+



## CUL207 Culinary Ladies' Chef Baggy

Area of Measurement	XS	S	M	L	XL	2XL	3XL	4XL	5XL
<b>Waist</b>	79-84	85-90	91-95	96-104	105-113	114-119	120-124	125-130	131+
<b>Hip</b>	88-97	98-102	103-108	109-114	115-119	120-125	126-131	132-138	139+



## CUL208 Culinary Mens' Chef Trouser

Area of Measurement	XS	S	M	L	XL	2XL	3XL	4XL	5XL
<b>Waist</b>	59-69	70-78	79-86	87-98	98-111	112-127	128-138	139-150	151+
<b>Hip</b>	70-78	79-87	88-97	98-104	105-112	113-125	126-137	138-146	147+

\*Measurements are in centimetres and may vary slightly on design.  
Chest, Waist and Hip measurements are to be taken right around the body.  
Do refer to measurements given for specific items above before purchase.  
This measurement chart applies to this classic culinary range ONLY.  
For more information regarding sizing please email: [chefgear@worksgroup.co.za](mailto:chefgear@worksgroup.co.za)